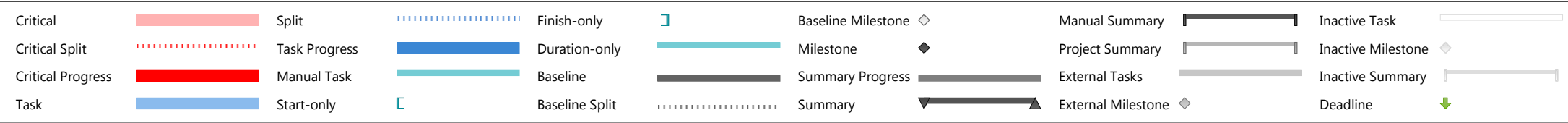
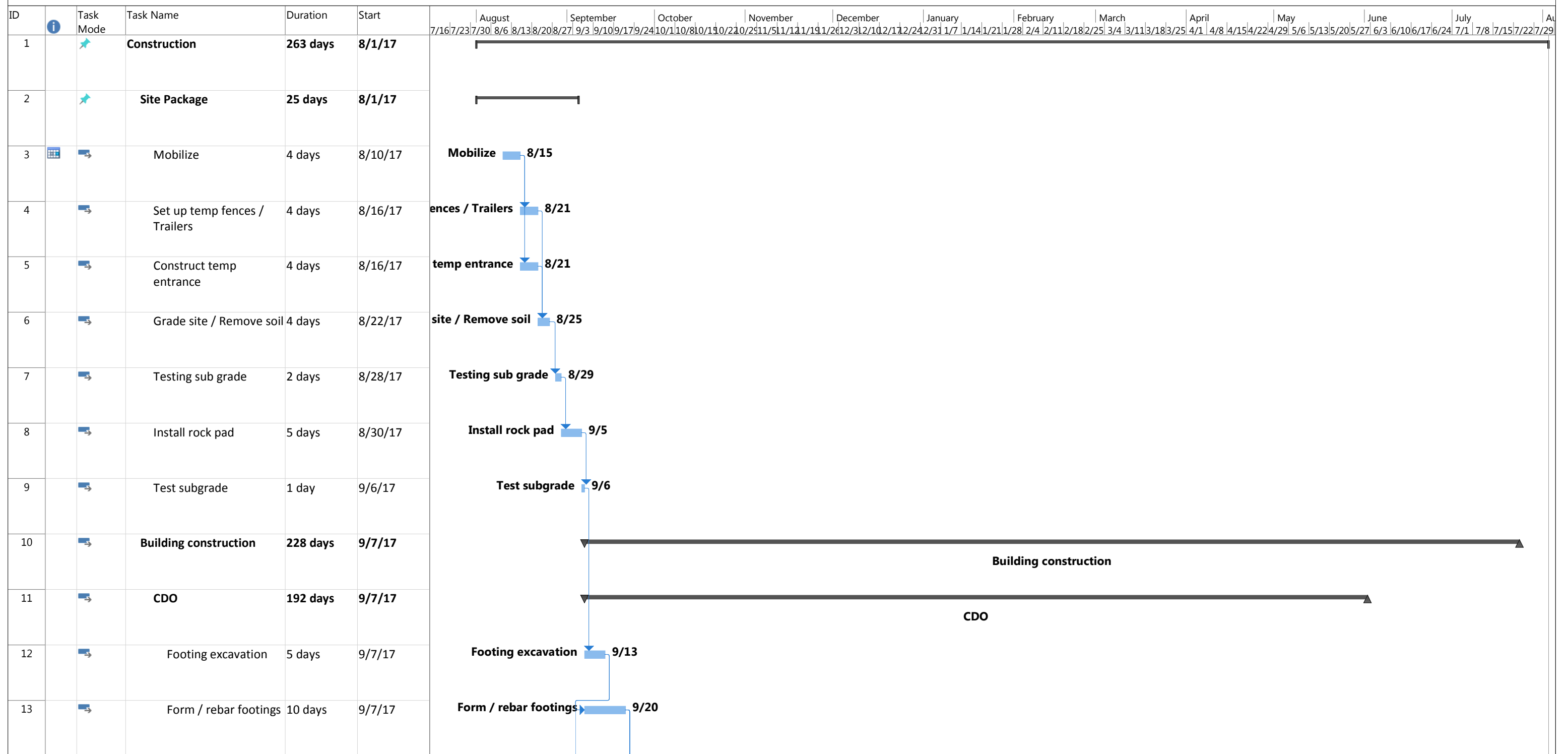
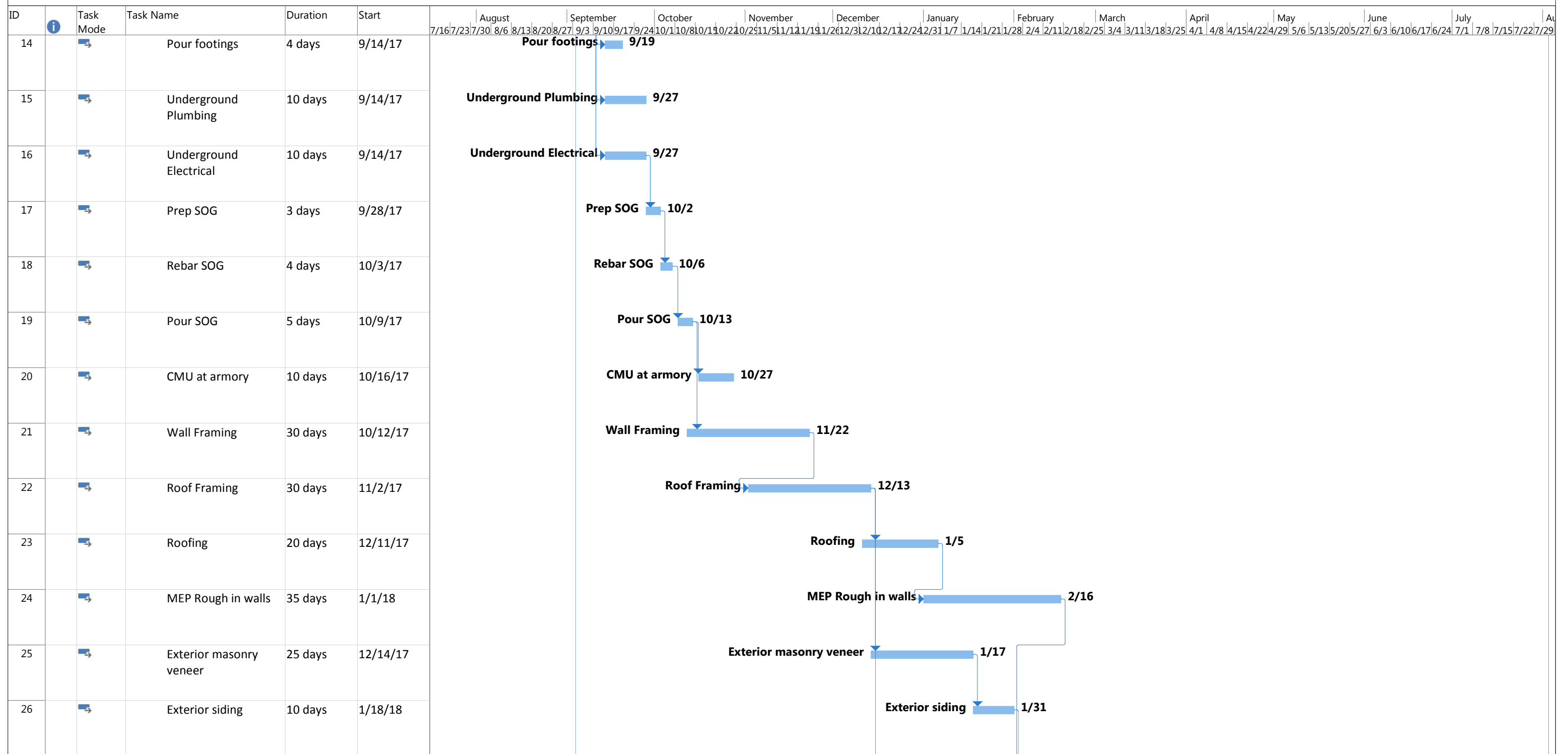


Marion County Sheriff CDO / P1 Building

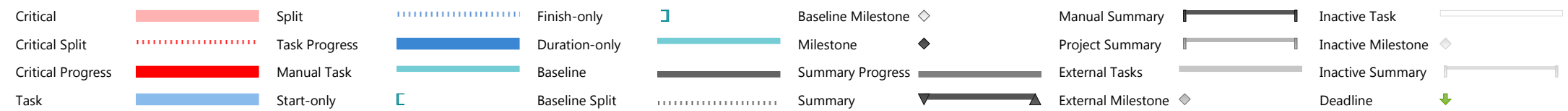
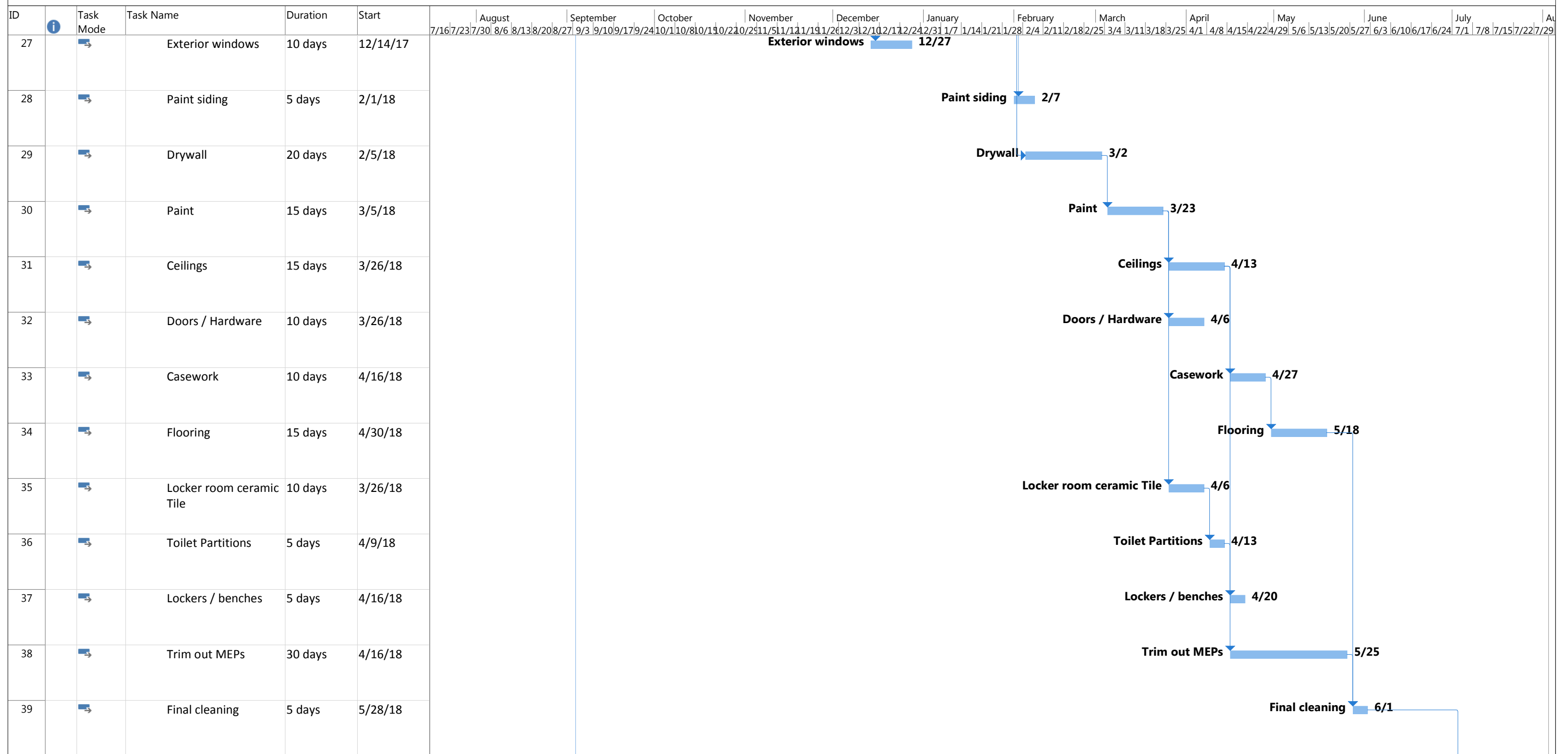


Marion County Sheriff CDO / P2 Building

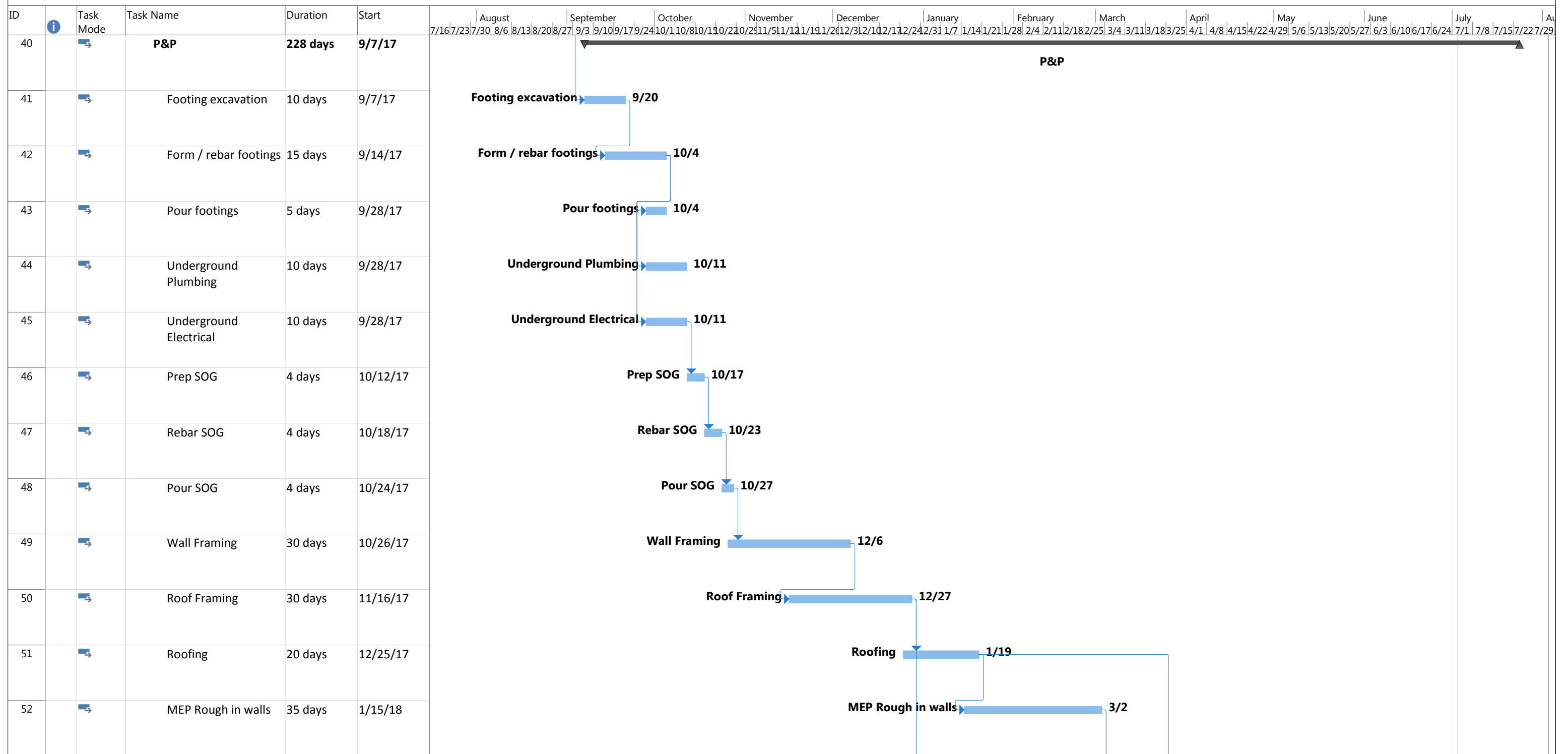


Critical		Split		Finish-only		Baseline Milestone		Manual Summary		Inactive Task	
Critical Split		Task Progress		Duration-only		Milestone		Project Summary		Inactive Milestone	
Critical Progress		Manual Task		Baseline		Summary Progress		External Tasks		Inactive Summary	
Task		Start-only		Baseline Split		Summary		External Milestone		Deadline	

Marion County Sheriff CDO / P3 Building

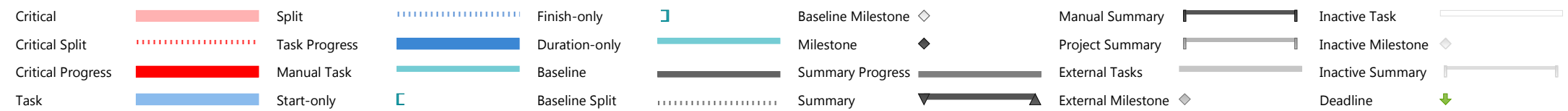
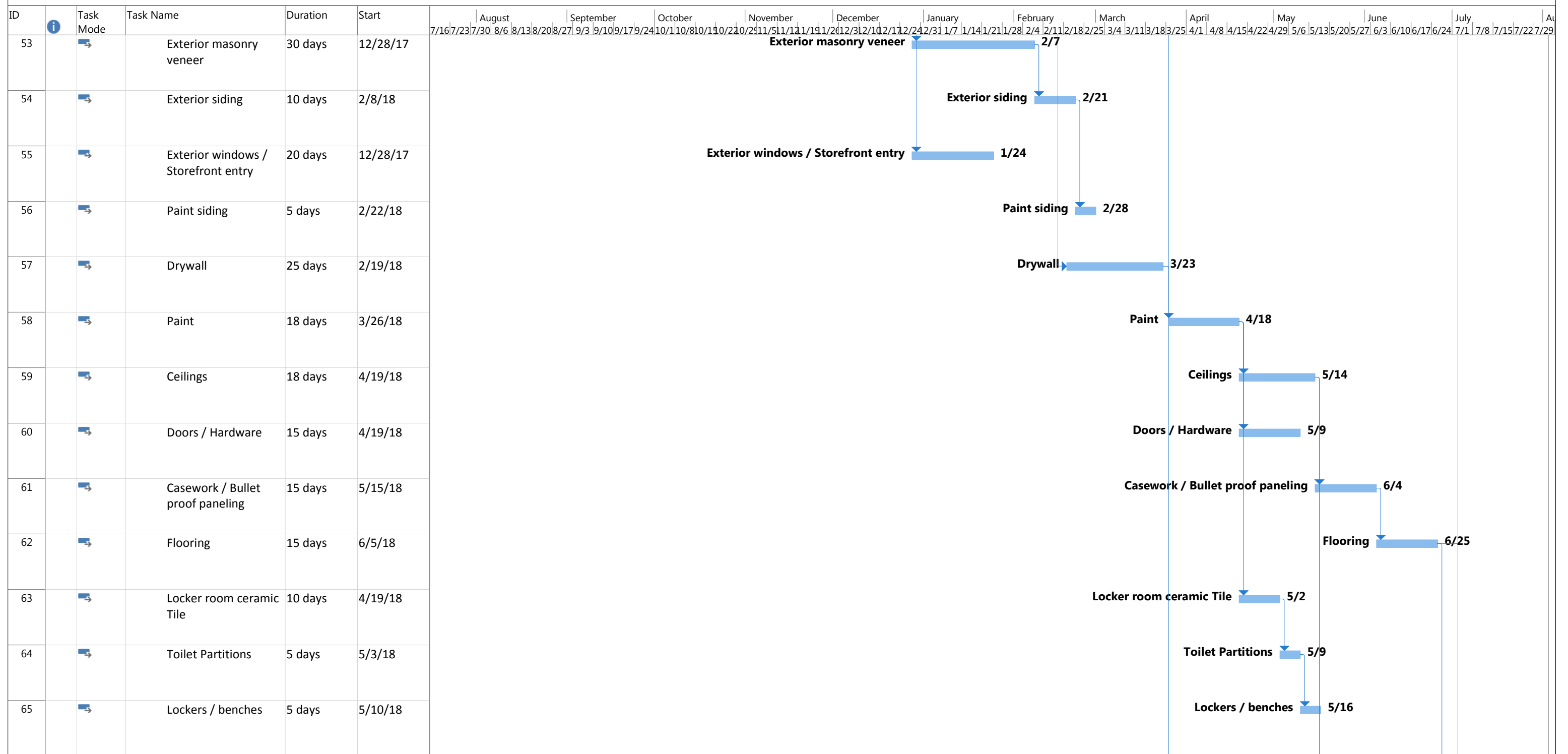


Marion County Sheriff CDO / P4 Building



Critical	█	Split	 	Finish-only	 	Baseline Milestone	◇	Manual Summary	 	Inactive Task	
Critical Split	⋯	Task Progress	 	Duration-only	 	Milestone	◆	Project Summary	 	Inactive Milestone	◇
Critical Progress	█	Manual Task	 	Baseline	 	Summary Progress	 	External Tasks	 	Inactive Summary	
Task	█	Start-only	 	Baseline Split	 	Summary	▼	External Milestone	◇	Deadline	↓

Marion County Sheriff CDO / P5 Building



Marion County Sheriff CDO / P6 Building

ID	Task Mode	Task Name	Duration	Start	Gantt Chart
66	→	Trim out MEPs	30 days	5/15/18	
67	→	Final Cleaning	5 days	6/26/18	
68	→	Punch list	15 days	7/3/18	
69	→	Exterior Finishes	50 days	3/26/18	
70	→	Rock prep of all paved areas	10 days	3/26/18	
71	→	Curbs and gutters	15 days	4/2/18	
72	→	Sidewalks	15 days	4/16/18	
73	→	AC Paving	10 days	5/7/18	
74	→	Striping	5 days	5/21/18	
75	→	Exterior security fencing	15 days	5/7/18	
76	→	Landscape and Irrigation	30 days	4/23/18	
77	→	Flag Pole	5 days	5/7/18	

Critical		Split		Finish-only		Baseline Milestone		Manual Summary		Inactive Task	
Critical Split		Task Progress		Duration-only		Milestone		Project Summary		Inactive Milestone	
Critical Progress		Manual Task		Baseline		Summary Progress		External Tasks		Inactive Summary	
Task		Start-only		Baseline Split		Summary		External Milestone		Deadline	